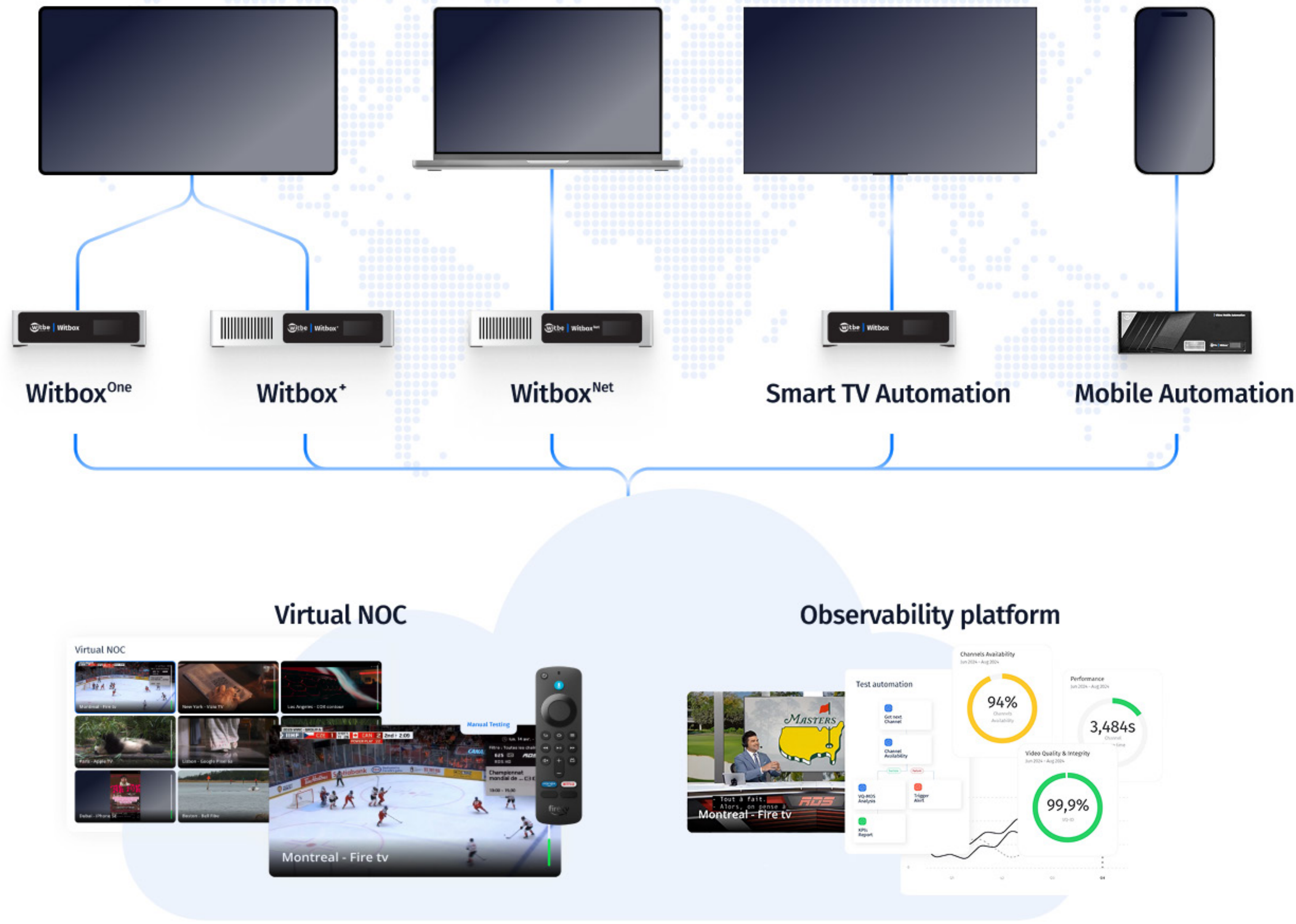
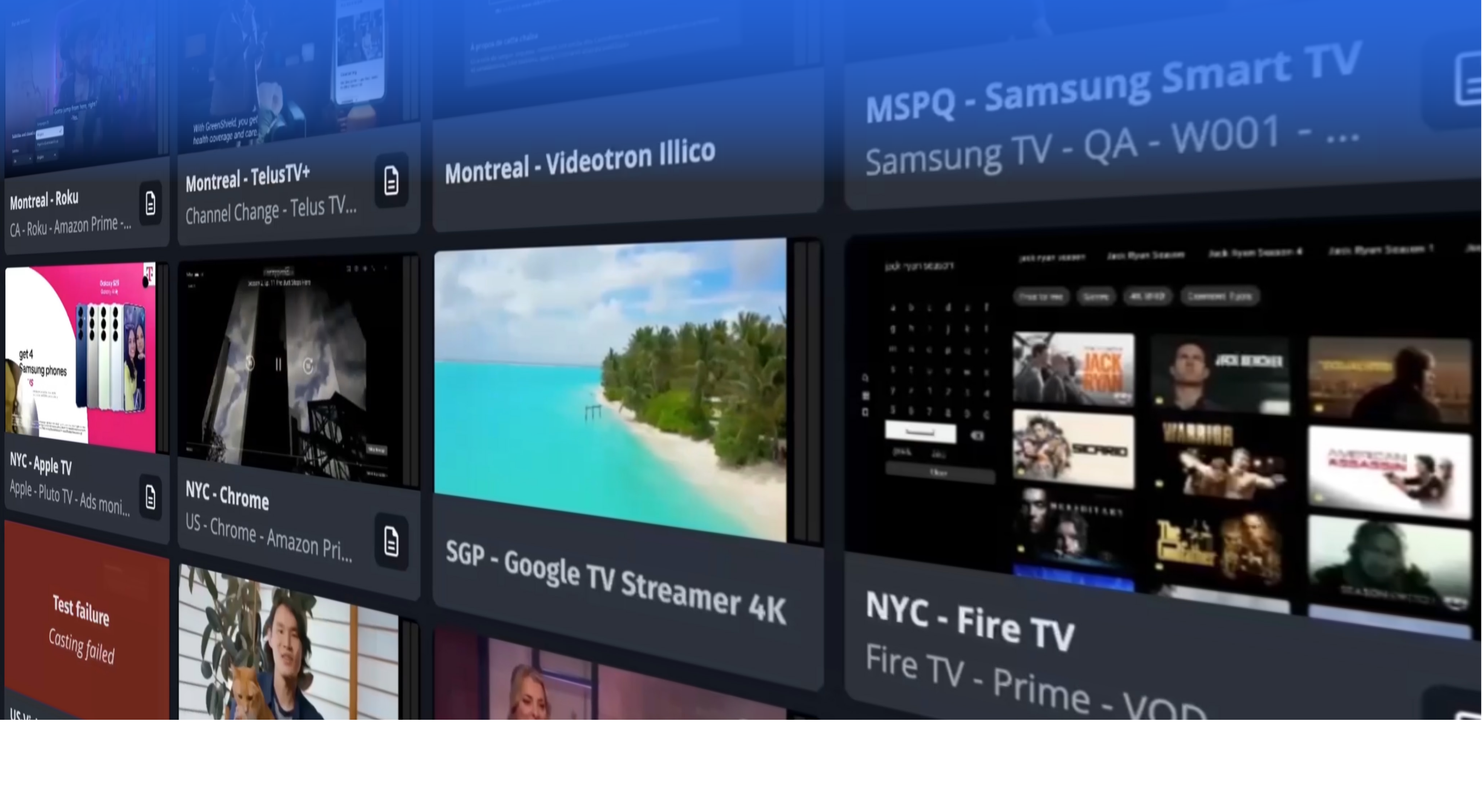




## Post-device video testing and real-time monitoring



## Remote QA and field testing to always deliver your best streaming quality



## About Witbe

Witbe provides **automated testing and proactive monitoring technology** for global video service providers.

Our non-intrusive, plug-and-play solution replicates real user behavior to test and monitor any video app on any real device, anywhere in the world.

By measuring the actual Quality of Experience at the edge of the video delivery path, Witbe ensures that teams—across QA, technical, and operations—can **detect issues faster** and fix them collaboratively through one unified platform.

With a presence in over a dozen offices worldwide, Witbe proudly supports customers in more than 50 countries.

## Trusted by customers worldwide



## Video testing and monitoring on real devices

### Remote device control

Check video service quality in real time from any physical testing device anywhere in the world.

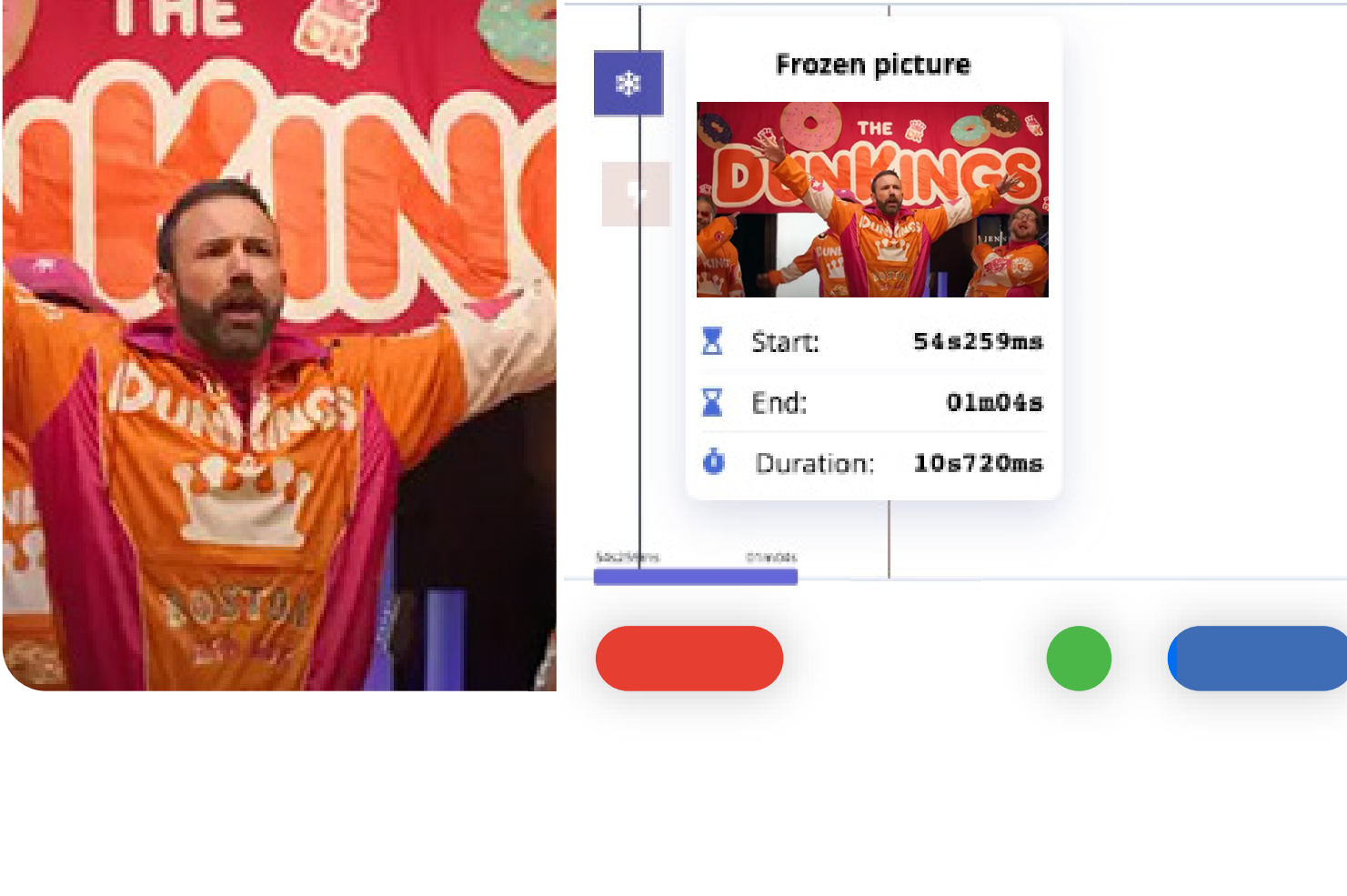
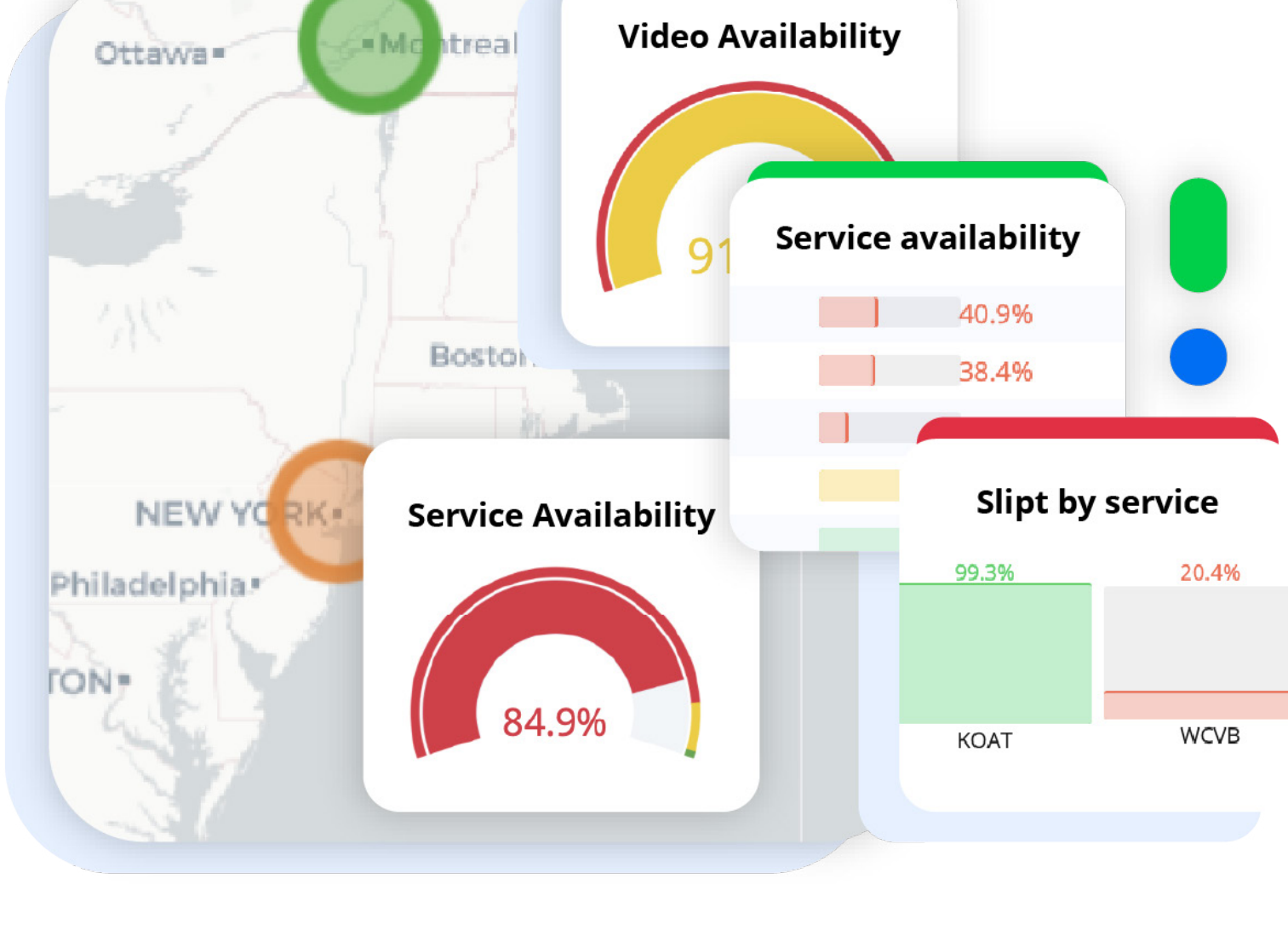


### QA test automation

Cover the endurance, performance, and stress testing that human team members can't complete manually.

### Video service monitoring

Receive real-time alerts whenever a VoD or live service error occurs, with video traces to identify and fix it quickly.

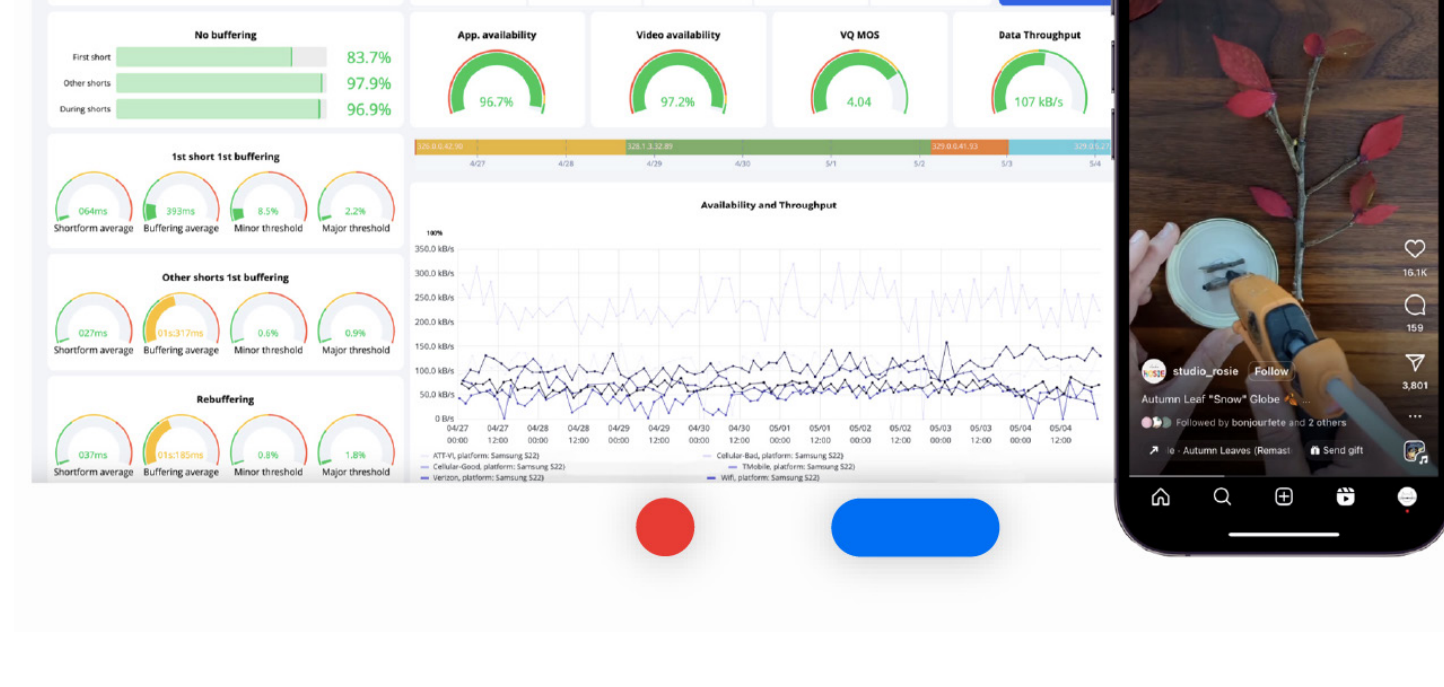


### Ad monitoring and matching

Identify streaming issues caused by dynamic ad insertion to improve performance.

### Vertical video monitoring

Test mobile apps live in real-time with pre-set cases —no integration needed. Optimize traffic and ensure smooth playback.





# The Witbe advantage

Witbe empowers video service providers to deliver optimal quality with smarter testing, faster troubleshooting, and seamless collaboration—across lab and field.

## User-centric

Measure true Quality of Experience with real-device testing in both lab and field environments—just like your users see it.

## Plug & Play

Deploy instantly: plug in any device to start remote access, control, and testing.

No integration required.

## Smart Automation

Accelerate QA with continuous testing powered by AI that automates repetitive tasks—without compromising quality.

## Collaborative & Instant

Engineers, QA, DevOps, Operations, Marketing, and partners work together on the same secure platform—sharing real-time data and video evidence for instant resolution.

## Reliable & Secure Monitoring

Get an objective reference of video quality with verified recordings you can trust—protected by encrypted traffic, SSO, and access control lists (ACL) for secure collaboration and faster decision-making.

# Witbe's role across the product lifecycle

## Development

- Continuous builds focused on unit testing and early-stage validation.
- Primarily whitebox testing with ADB for fast, actionable feedback.

## QA / Labs

- Weekly builds tested across UI and backend systems.
- Functional, performance, and stability testing ensure product robustness.
- Continuous testing simulates real user experiences.

## Product Field

- Ongoing weekly testing on pre-release builds.
- End-to-end checks validate lineup, performance, stability, and sanity.
- Comparison of current production vs. release candidates ensures quality.

## Field Operations

- Aligned with customer deployments for real-world validation.
- Virtual NOC enables remote access and proactive alerts.
- Covers maintenance checks, VoD asset verification, and ad monitoring.

# Awarded by



# Proud member of



# Contact us

✉ [hello@witbe.net](mailto:hello@witbe.net)

🌐 [witbe.net](https://witbe.net)

